



Peters Township
A Home Rule Community

Public Works Department

2020 ANNUAL REPORT

Public Works Staff

Joseph Hursen

Public Works Director

John Agostinella

Road Foreman

Jay Mizia

Park Maintenance
Supervisor



2020 Annual Report Index

▪ Duties & Silver Level Certification	3	▪ Facilities Renovations / Police Station	16 - 17
▪ Statistics	4	▪ Facilities Project / Salt Storage Canopy	18
▪ Park Projects	5	▪ Street Signs	19
▪ Hazardous Tree Removal	6	▪ 2020 Accomplishments	20
▪ Storm/Catch Basin Projects	7	▪ Weather Related Accidents	21
▪ Storm Sewer Replacement	8	▪ Hazardous Tree Removal	22
▪ Pipe Installation & Repair	9	▪ Safety Training	23
▪ Pipe Replacement	10	▪ Yard Waste Program	24
▪ Base Repairs & Paving	11	▪ Leaf Collection/ Vacuuming	25 - 26
▪ Veterans Memorial / Leaf Collection	12	▪ Snow Removal	27
▪ Vehicle & Equipment Repairs	13	▪ Yearly Programs	28 - 29
▪ New Brine System Project	14 - 15		



**PETERS TOWNSHIP HAS BEEN
SILVER LEVEL CERTIFIED
IN THE SUSTAINABLE COMMUNITY ESSENTIALS CERTIFICATION**



Peters Township Public Works Department provides continual service to residents in the way of Paving Roads, Street Maintenance, Street Lights, Traffic Signals & Signs, Leaf & Yard Waste Collection, Snow Removal on Township and State Contracted Roads, and Storm Sewer System Maintenance, as well as Facilities & Parks Maintenance.

Peters Township has become certified through the Southwestern Pennsylvania Sustainable Community Essentials Certification program. Peters Township is recognized at the silver level of certification for meeting the program's rigorous performance criteria which tracks 131 policies and practices that define a sustainable community. The Sustainable Community Essentials Certification, developed by Sustainable Pittsburgh, is designed for municipalities that are working to save money, conserve resources, and serve vibrant communities. It applauds municipalities for their demonstrated commitment and sustainability performance.



[HTTP://WWW.SUSTAINABLEPACOMMUNITYCERTIFICATION.ORG/USERS/CERTIFIED_MUNICIPALITIES](http://www.sustainablepacommunitycertification.org/users/certified_municipalities)

SW PA Sustainable Communities

Statistics

- 22 Full-Time Employees
- 116 Lane Miles of Roadways
- 8 Parks
- 12 Ballfields & The Arrowhead Trail
- 23 licensed vehicles
(Including 75 Pieces of Miscellaneous Equipment)
- 15 Traffic Signals
- 11 Township Buildings / Facilities
- 2,600 Storm Drains
- 3,500+ Road Signs
- 65 Stormwater Management Ponds



Park Projects



Hazardous Tree Removal



Storm/Catch Basin Projects

LINK TO THE PETERS TOWNSHIP MS4 PAGE

[HTTP://WWW.PETERSTOWNSHIP.COM/INDEX.ASP?TYPE=B_BASIC&SEC={DF70DAD2-B2A8-4568-834B-31D3D919E36B}](http://www.peterstownship.com/index.asp?type=B_BASIC&SEC={DF70DAD2-B2A8-4568-834B-31D3D919E36B})

STORM SEWER SYSTEM MAINTENANCE

PUBLIC WORKS DEPARTMENT ANNUALLY AVERAGES 25 STORM/CATCH BASIN REBUILD/REPAIR PROJECTS PER YEAR. 2020 THE DEPARTMENT INSTALLED THREE NEW STORM BASINS, REBUILT FIVE, AND REPAIRED ONE BASIN, THERE WAS A TOTAL OF NINE BASIN PROJECTS COMPLETED IN 2020.

THE PUBLIC WORKS DEPARTMENT ALSO WORKS IN CONJUNCTION WITH THE ENGINEERING DEPARTMENT ON MS4 REQUIREMENTS RELATED TO STORM WATER MANAGEMENT SYSTEMS THROUGHOUT THE TOWNSHIP. IN ADDITION, THE DEPARTMENT ALSO PERFORMS DREDGING OPERATIONS TO PROMOTE AND MAINTAIN CONTROLLED RUNOFF IN ORDER TO REDUCE BACKUPS AND FLOODING. THE DEPARTMENT ROUTINELY INSPECTS STORM WATER SYSTEM COMPONENTS EX: HEAD WALLS, END WALLS, AGE AND CONDITION OF PIPES IN ADDITION TO OVERALL SYSTEM FUNCTION.



STORM / CATCH BASIN PROJECTS

	REPAIRED	REBUILT	NEW
2020	1 (REDUCED DUE TO COVID)	5 (REDUCED DUE TO COVID)	3 (REDUCED DUE TO COVID)
2019	26	11	2
2018	09	14	0
2017	06	10	2

Storm Sewer Replacement



PIPE INSTALLATION & REPAIR

THE TOWNSHIP CONTINUES TO IMPROVE UPON THE ENVIRONMENT THROUGH ITS MS4 PROGRAM (MUNICIPAL SEPARATE STORM SEWER SYSTEM). THE MAIN GOAL IS TO IMPROVE SURFACE WATER QUALITY THROUGH THE REGULATION OF STORM WATER DISCHARGES WHICH CAN BE AFFECTED BY ACTIVITIES WITHIN THE TOWNSHIP'S WATERSHED. IT IS THROUGH EDUCATION & OUTREACH THE TOWNSHIP IS EAGER TO MAKE THE RESIDENTS & BUSINESSES AWARE OF THE REQUIREMENTS OF THE PENNSYLVANIA DEPARTMENT OF ENVIRONMENTAL PROTECTION AND THE U.S. EPA.



THE PUBLIC WORKS DEPARTMENT IS IN THE PROCESS OF UPGRADING OLDER/OUTDATED DETERIORATING CORRUGATED METAL PIPES (CMP) THROUGHOUT THE TOWNSHIP. IN 2020 THE DEPARTMENT INSTALLED 140 FEET OF HEAVY- DUTY CORRUGATED POLYETHYLENE PIPE.



THERE ARE MANY WAYS FOR TOWNSHIP RESIDENTS TO BE INVOLVED TO IMPROVE THE ENVIRONMENT.

LINKS OF WAYS RESIDENTS CAN HELP.



- [HTTP://WWW.PETERSTOWNSHIP.COM/VERTICAL/SITES/%7B3BE5B086-2A15-4083-A63D-16B3DD03C8DD%7D/UPLOADS/CARWASH_POSTER.PDF](http://www.peterstownship.com/vertical/Sites/%7B3BE5B086-2A15-4083-A63D-16B3DD03C8DD%7D/uploads/CARWASH_POSTER.PDF)
- [HTTP://WWW.PETERSTOWNSHIP.COM/VERTICAL/SITES/%7B3BE5B086-2A15-4083-A63D-16B3DD03C8DD%7D/UPLOADS/FERTILIZER_POSTER.PDF](http://www.peterstownship.com/vertical/Sites/%7B3BE5B086-2A15-4083-A63D-16B3DD03C8DD%7D/uploads/FERTILIZER_POSTER.PDF)
- [HTTP://WWW.PETERSTOWNSHIP.COM/VERTICAL/SITES/%7B3BE5B086-2A15-4083-A63D-16B3DD03C8DD%7D/UPLOADS/PETWASTE_POSTER.PDF](http://www.peterstownship.com/vertical/Sites/%7B3BE5B086-2A15-4083-A63D-16B3DD03C8DD%7D/uploads/PETWASTE_POSTER.PDF)
- [HTTP://WWW.PETERSTOWNSHIP.COM/VERTICAL/SITES/%7B3BE5B086-2A15-4083-A63D-16B3DD03C8DD%7D/UPLOADS/RAIN_GARDEN_ARTICLE.PDF](http://www.peterstownship.com/vertical/Sites/%7B3BE5B086-2A15-4083-A63D-16B3DD03C8DD%7D/uploads/RAIN_GARDEN_ARTICLE.PDF)
- [HTTP://WWW.PETERSTOWNSHIP.COM/VERTICAL/SITES/%7B3BE5B086-2A15-4083-A63D-16B3DD03C8DD%7D/UPLOADS/OILSLICK_POSTER.PDF](http://www.peterstownship.com/vertical/Sites/%7B3BE5B086-2A15-4083-A63D-16B3DD03C8DD%7D/uploads/OILSLICK_POSTER.PDF)
- [HTTP://WWW.PETERSTOWNSHIP.COM/VERTICAL/SITES/%7B3BE5B086-2A15-4083-A63D-16B3DD03C8DD%7D/UPLOADS/WINTER_SALT_USAGE.PDF](http://www.peterstownship.com/vertical/Sites/%7B3BE5B086-2A15-4083-A63D-16B3DD03C8DD%7D/uploads/WINTER_SALT_USAGE.PDF)

Pipe Replacement



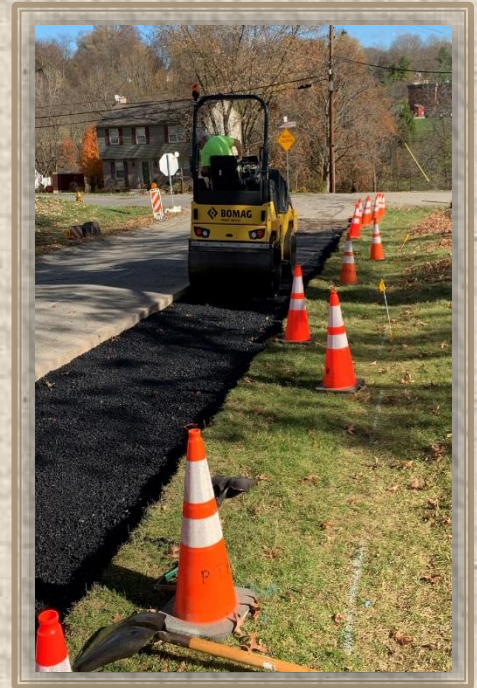
Public Works Department applied 110 tons of asphalt material this year.

Paving Projects were placed on hold this year due to COVID-19

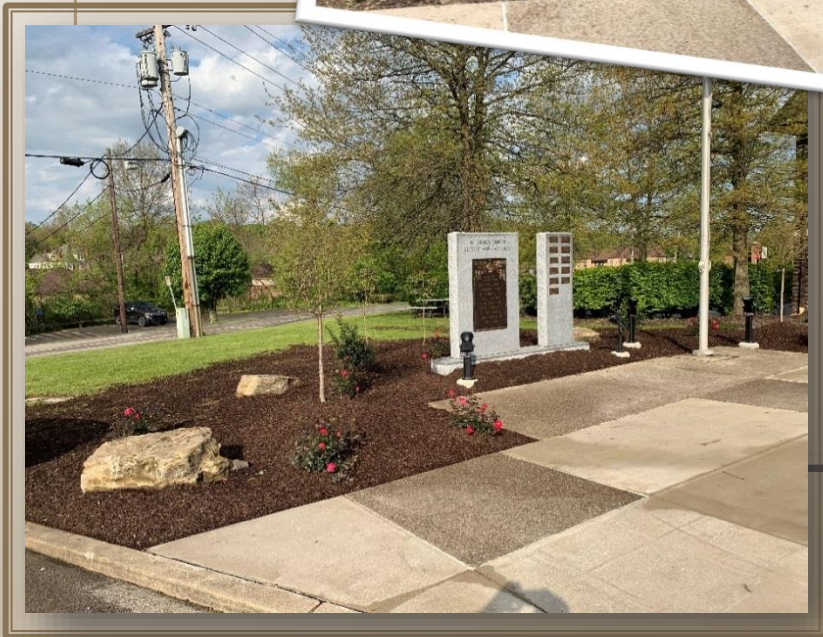
Peters Twp. will continue the Joint Paving Program with Nottingham Twp., Canton Twp. & South Strabane Twp.



BASE REPAIRS & PAVING



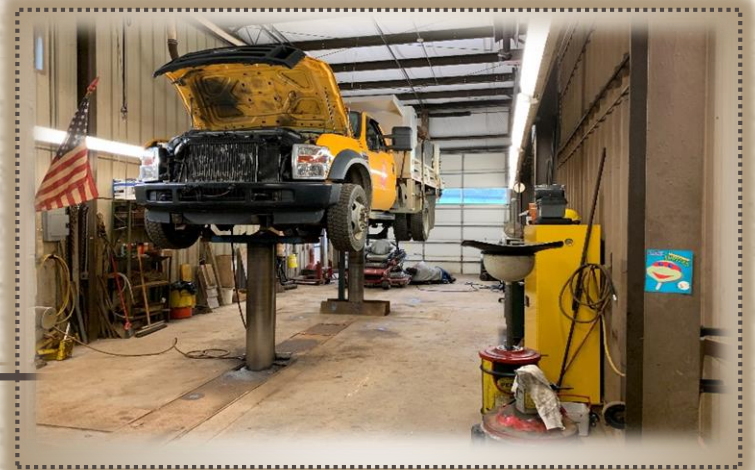
Veterans Memorial



Leaf Collection



VEHICLE & EQUIPMENT REPAIRS



NEW BRINE SYSTEM PROJECT



NEW BRINE SYSTEM PROJECT



Facilities Renovations

Police Station



Facilities Renovations

Police Station



Facilities Projects / Repairs Salt Storage Canopy



ONGOING INSTALLATION OF NEW STREET NAME SIGNAGE

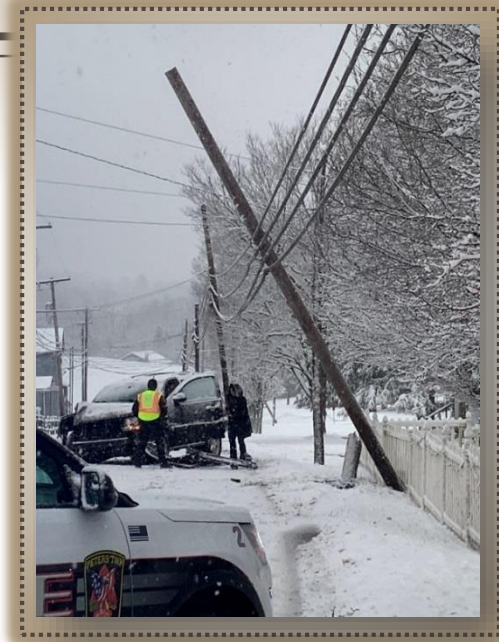


2020 Accomplishments

- Renovations to the Police Station
- Installation of 110' Heavy-duty Corrugated Pipe
- Roadside & Pond Mowing
- Employee Training
 - New Equipment Limb Chipper & Flagger Training
- 173 Weekly Residential Leaf Collection Requests
- 333 Residential Yard Waste Collection Requests
- Reconstruction of 9 Storm Basins
- Installation of 129 new Traffic/Street Signs
- Facility Maintenance
- Street Sweeping
- Hazardous Tree Removal
- Installation of New Brine System
- Painting at the Library



Weather Related Accidents



Safety Training

New Limb Chipper Safety Training



Flagger Recertification



Yard Waste Program



THE YARD WASTE COLLECTION SERVICE WAS ESTABLISHED TO ASSIST RESIDENTS WITH THE DISPOSAL OF SMALL AMOUNTS OF YARD WASTE NOT NORMALLY COLLECTED BY WASTE MANAGEMENT. TO BE SCHEDULED FOR SERVICE YOUR REQUEST MUST BE RECEIVED NO LATER THAN 7:00 AM MONDAY MORNING OF THE WEEK THE SERVICE IS BEING OFFERED. HOWEVER, YOU MUST ADHERE TO CERTAIN REQUIREMENTS IN ORDER FOR THE PUBLIC WORKS DEPARTMENT TO SERVICE YOUR NEEDS.

- BRANCHES, LIMBS AND SHRUB TRIMMINGS SHOULD BE CUT INTO 4 – 6 FOOT LENGTHS. THESE SHOULD BE PLACED CURBSIDE IN ORDERLY PILES, OR TIED INTO BUNDLES. LARGE PILES PLACED HELTER-SKELTER IN LARGES MASSES WILL NOT BE ACCEPTED. IT IS NOT NECESSARY TO TIE OR BUNDLE LARGE PILES OR BRANCHES.
- PUBLIC WORKS CAN ACCEPT UP TO A 6 INCH IN DIAMETER BRANCH; LARGER DIAMETER BRANCHES CANNOT BE ACCEPTED AS THEY WILL NOT FIT INTO THE CHIPPER.
- ITEMS NOT ACCEPTED ARE: STUMPS, ROOT BALLS, GRASS AND GARDEN CLIPS, FIREPLACE SIZED LOGS OR SHORT LOGS. THESE ITEMS WILL JAM THE CHIPPING MACHINE AND THE DISPOSAL SITE WILL NOT ACCEPT THEM.
- AT ANY GIVEN TIME THE DEPARTMENT WILL REMOVE THE EQUIVALENT OF WHAT WOULD FIT INTO THE BACK OF A PICK-UP TRUCK. VOLUMES EXCEEDING THAT AMOUNT MAY BE LEFT CURBSIDE AND IT WILL BE NECESSARY FOR YOU TO CALL PUBLIC WORKS TO ARRANGE FOR AN ADDITIONAL PICK UP. THE ROUTE DRIVE CAN REJECT ANY STOP IF THESE GUIDELINES ARE NOT FOLLOWED.

You may reach the Public Works Department at any time – seven days a week/24 hours a day, please leave your name, phone number and address that you wish a pick up to be scheduled.

2020 YARD WASTE	STOPS
MAR 16	16
JUNE 1	35
JUNE 15	43
JUNE 29	29
JULY 13	26
JULY 27	29
AUG 10	21
AUG 24	27
SEPT 9	29
SEPT 21	25
OCT 5	19
OCT 19	19
NOV 2	18

Leaf Collection



2020 Leaf Collection Season

Week 1: October 26th - October 29th

Week 2: November 2nd - November 5th

Week 3: November 9th - November 12th

Week 4: November 16th - November 19th

NO PICKUP OF THANKSGIVING WEEK

Week 5: November 30th - December 3rd



2020 LEAF COLLECTION / REQUESTS

147 WEEKLY REQUESTS

SERVICE FEES \$16,170.00

Once again this year, the collection of Leaf Waste will take place on the same day your garbage is collected.

Once all of the garbage is collected, Waste Management will make a second pass through the community to collect leaves.

Leaf waste will continue to be composted at the municipal compost site.

REMINDER: Leaf Waste must be deposited in paper lawn and leaf bags that can be purchased at various stores throughout the community. The Township does not provide the required paper bags. Bags must be purchased from stores by residents.

All bags must be at curbside by 6 a.m.

NOTE: Leaf Waste in plastic bags will not be picked up.

Leaf Vacuuming Program

LEAF COLLECTION SCHEDULE: FALL 2020

The collection of leaf waste will take place on the same day your garbage is collected. Leaves will be picked up as a separate collection from your garbage and recycling. Leaf waste will continue to be composted at the municipal compost site.

You may place leaf waste out prior to October 26 and after December 3, and those leaves will be taken with the regular trash collection. During the five designated leaf collection weeks listed below, leaves must be in paper lawn and leaf bags or they will not be taken.

Leaf Collection Season

- Week 1: October 26 - October 29
- Week 2: November 2 - November 5
- Week 3: November 9 - November 12
- Week 4: November 16 - November 19
- NO PICKUP OF THANKSGIVING WEEK
- Week 5: November 30 - December 3

These dates are also noted on the Peters Township Calendar. Please note that there is NO Leaf Pickup during the week of Thanksgiving (Nov. 23 - Nov. 27)

REMINDER: Leaf waste must be deposited in paper lawn and leaf bags that can be purchased at various stores throughout the community. Leaf waste in plastics bags will not be picked up during the leaf collection season.

* All bags must be at curbside by 6 a.m.

RECYCLE. DO NOT BURN YOUR LEAVES



Pennsylvania's leaf recycling law requires residents in communities with populations over 5,000 to recycle—not burn—leaves and yard waste. Burning of leaves is strictly prohibited in Peters Township. The Township does permit burning of acceptable debris (limbs & branches) four days per week: Wednesday, Thursday, Friday, and Saturday between 9 a.m. and 3 p.m.

LEAF VACUUMING

As an alternate means of helping residents get rid of their annual leaf waste, Council has authorized the Public Works Department to offer a leaf vacuuming service on a subscription basis. Residents interested in the program should contact the Peters Township Municipal Building at 724.941.4180 for more information on how to purchase a fall subscription. The subscription rate is \$110 per home, which covers weekly leaf vacuuming during the fall season.



How should my leaves be arranged?

Leaves are to be raked or moved to the curb and formed in a long row approximately four feet wide. The machinery that collects the leaves cannot reach any farther than four feet from the gutter-line or edge of the street.

*** Do Not Place Leaf Piles in the Street ***

Snow Removal

Snow Removal

SNOW REMOVAL POLICY

Peters Township now performs snow removal on 131 miles of roads, 21 of those by contract with PennDOT. The Township has a council-endorsed policy that basically states that from the time the Public Works Department is first notified of hazardous road conditions, all roads within its jurisdiction will be treated with salt within 3.5 hours. If snow plowing is required, the policy states that all roads will have been plowed at least once within 5 to 6 hours.

The Public Works Department's vehicle inventory has 11 fully equipped trucks plus three additional vehicles equipped only with snowplows.

The 2020 estimated expenditures for snow removal are \$575,475.00. Just like last winter season, the Township has two separate contracts for salt from two separate suppliers. We anticipate purchasing over 4,000 tons of salt at a cost of \$78.82 per ton, which is the same as last year. As the cost of salt increases, every effort is made to maximize salt usage. This is done by pretreating the salt with a brine solution in addition to not treating roads in the late overnight hours unless conditions are severe. Our goal is to be out early enough to treat the roads for school bus service without a delay. The Public Works Department works closely with the School District to keep them up to date on the status of snow removal operations so the district can make an informed decision on whether or not to delay school. The use of two salt providers ensured that we had a steady source of salt throughout the winter. Historically, Peters Township has never been without salt, and we will be continuing this practice.

OUR CONTRACT WITH PENNDOT

Under a contractual agreement with PennDOT, the Public Works Department provides snow removal service to the following state highways within Peters Township:

- East McMurray Road
- Valley Brook Road east of Route 19
- Thomas Road
- Sugar Camp Road
- Church Hill Road
- Bebout Road
- Justabout Road

The Peters Township Public Works Department does not service:

- Waterdam Road
- Route 19 (Washington Road)
- West McMurray Road
- Valley Brook-West of Route 19
- Venetia Road

If you have any questions or comments the streets maintained by PennDOT call 724.223.4480.

SNOW EMERGENCIES

When a significant snowfall occurs, it is sometimes necessary for the township to declare a snow emergency. During a snow emergency, on-street parking is prohibited and the police department can issue tickets or even have vehicles towed away.

Citations can be issued to operators of vehicles not equipped with snow tires or chains.

When a snow emergency is declared, it is broadcast on Peters Township Comcast Cable Channels 7 and 17 and Verizon Channels 38 and 40. This information is also distributed to a number of local radio, television stations and Peters Patch.



Snow Removal Photo from **IN** Community Magazine

Yearly Programs

DEPT. PAVING PROJECTS

2020	PAVING PROJECTS PLACED ON HOLD DUE TO COVID-19		
2019	McCLELLAND ROAD, MOORE DRIVE , BRUNI TRAIL CONNECTOR & PARKING AREA		
2018	ELM GROVE CONNECTOR PATH / NEW TRAIL CONNECTOR & PARKING LOT BRUNI DRIVE		
2017	RAILROAD STREET / AMPHITHEATER LOT / MAPLE LANE / PETERS LAKE CAUSEWAY / MILLINGS ACCESS ROAD		
2016	.50 MI + ROTARY PLAZA LOT		
2015	.34 MI. + .77	2014	.44 MI. + .58
2013	.58 MI.	2012	.30 MI.
	ARROWHEAD TRAIL		ARROWHEAD TRAIL

YARD WASTE COLLECTIONS

LEAF VACUUMING SERVICE

<u>YARD WASTE COLLECTIONS</u>		<u>LEAF VACUUMING SERVICE</u>	
2020	333 STOPS	2020	147 FOR \$16,170
2019	441 STOPS	2019	113 FOR \$12,430
2018	385 STOPS	2018	97 FOR \$10,670
2017	455 STOPS	2017	70 FOR \$ 7,700
2016	408 STOPS	2016	76 FOR \$ 8,360
2015	409 STOPS	2015	75 FOR \$ 4,165
2014	417 STOPS	2014	65 FOR \$ 3,695
2013	319 STOPS	2013	72 FOR \$ 4,200
2012	315 STOPS	2012	87 FOR \$ 5,025

Yearly Programs

PA ONE CALLS

2020	2,147
2019	1,415
2018	1,925
2017	1,742
2016	1,109
2015	1,876
2014	1,877
2013	1,508
2012	1,908

